

# 15 Norton Folgate

NORTON FOLGATE

## Work Ready

BY BRITISH LAND





# A home for *ambition*

15 NORTON FOLGATE is an address with an innovative, entrepreneurial history. Over the years, it's been a silversmiths, a chemist's laboratory and London's first aquarium. This sense of commercial adventure has shaped its most recent reinvention as one of London's most compelling new workspace.

There's 12,008 sq ft of flexible workspace plus 1,230 sq ft of terraces with views over Spitalfields' Victorian rooftops. Part of the exciting new Norton Folgate quarter, No. 15 is a close neighbour to both the City financial district and Old Street's tech hub. All-electric and Net Zero at completion, it's an address that's ready to spark into life and inspire your next grand plan.





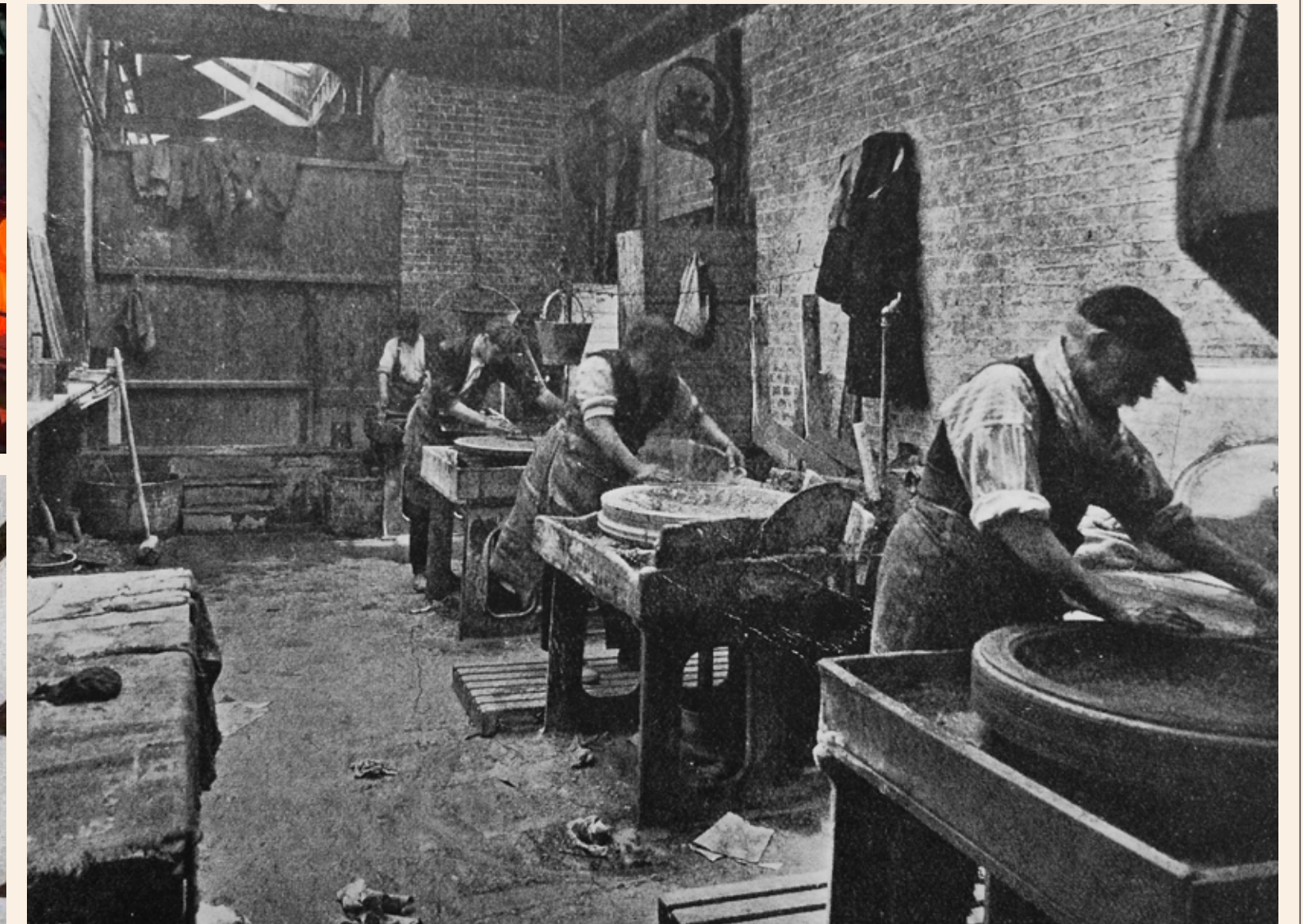
# Reinventing *success*

NORTON FOLGATE is a melting pot. A burgeoning community populated by the City of London's financial powerhouses, and Old Street's tech icons, startups and entrepreneurs.

There's Spitalfields Market's eclectic mix of shops and restaurants. Food from the likes of Hawksmoor and Ottolenghi. Authentic East End pubs. And a history that goes back to the Romans – who used Norton Folgate as a burial ground.

Yet the area's better known for the 12th Century St Mary Spital hospital that gave the Spitalfields district its name. Henry VII's dissolution of the monasteries led the rich and powerful to make it their home – introducing the Georgian and Victorian architecture that's still visible today.

For its part, 15 Norton Folgate has proudly worn many names above its door – notably James Stillwell, who weaved Queen Victoria's coronation cloth-of-gold. From leather-cutters to attorneys, and now you: this is a transformative address. A site where ideas flourish. Where business blooms.





# A quarter with *influence*

Award-winning Architects Morris+Company have collaborated with DSDHA, Stanton Williams and Allford Hall Monaghan Morris to create Norton Folgate. With 330,000 sq ft of mixed use space spread across six buildings, this is not just a place of work. It's a well-rounded community with historic character, impressive sustainability and a vibrant lifestyle.

**Nicholls & Clarke**  
26,838 SQ FT OFFICES  
3,934 SQ FT RETAIL



**Blossom Yard**  
12,456 SQ FT OFFICES REMAINING  
10,104 SQ FT RETAIL/RESTAURANT



**15 Norton Folgate**  
12,008 SQ FT OFFICES  
3,422 SQ FT RETAIL



**Elder Yard**  
74,823 SQ FT OFFICES  
8,092 SQ FT RESTAURANTS



**Nicholls & Clarke Yard**  
3,444 SQ FT PUBLIC SPACE



**Loom Court**  
47,151 SQ FT OFFICES  
1,790 SQ FT RESTAURANTS



**Blossom Yard**  
4,306 SQ FT PUBLIC SPACE



**16 Blossom Street**  
15,737 SQ FT OFFICES  
4,331 SQ FT RESTAURANTS



**ALLFORD  
HALL  
MONAGHAN  
MORRIS**

**MORRIS & CO**

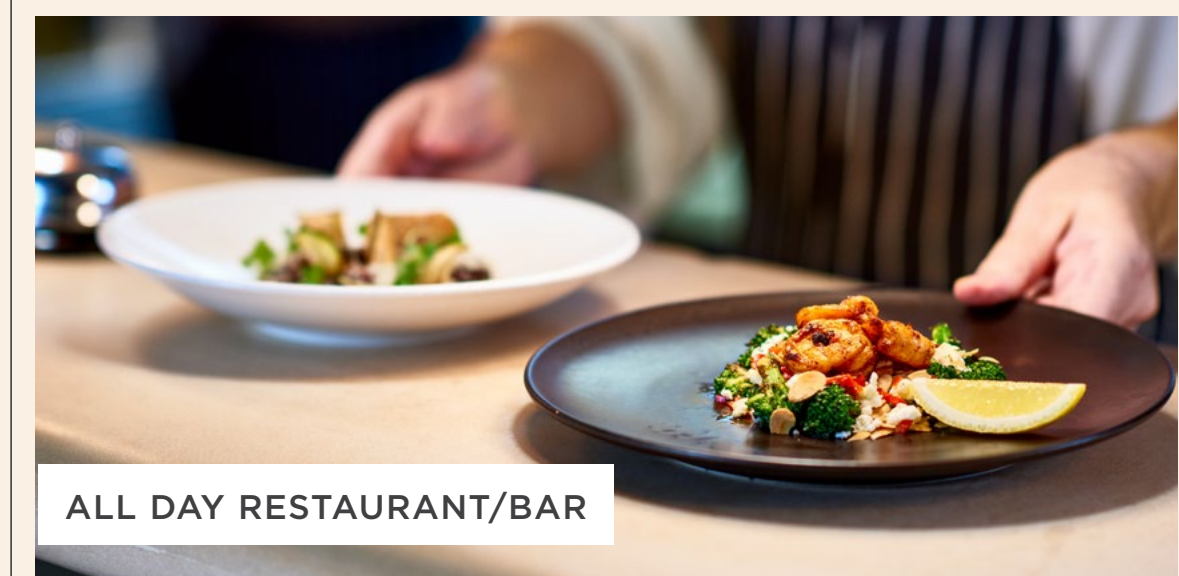
**DSDHA**

STANTON  
WILLIAMS

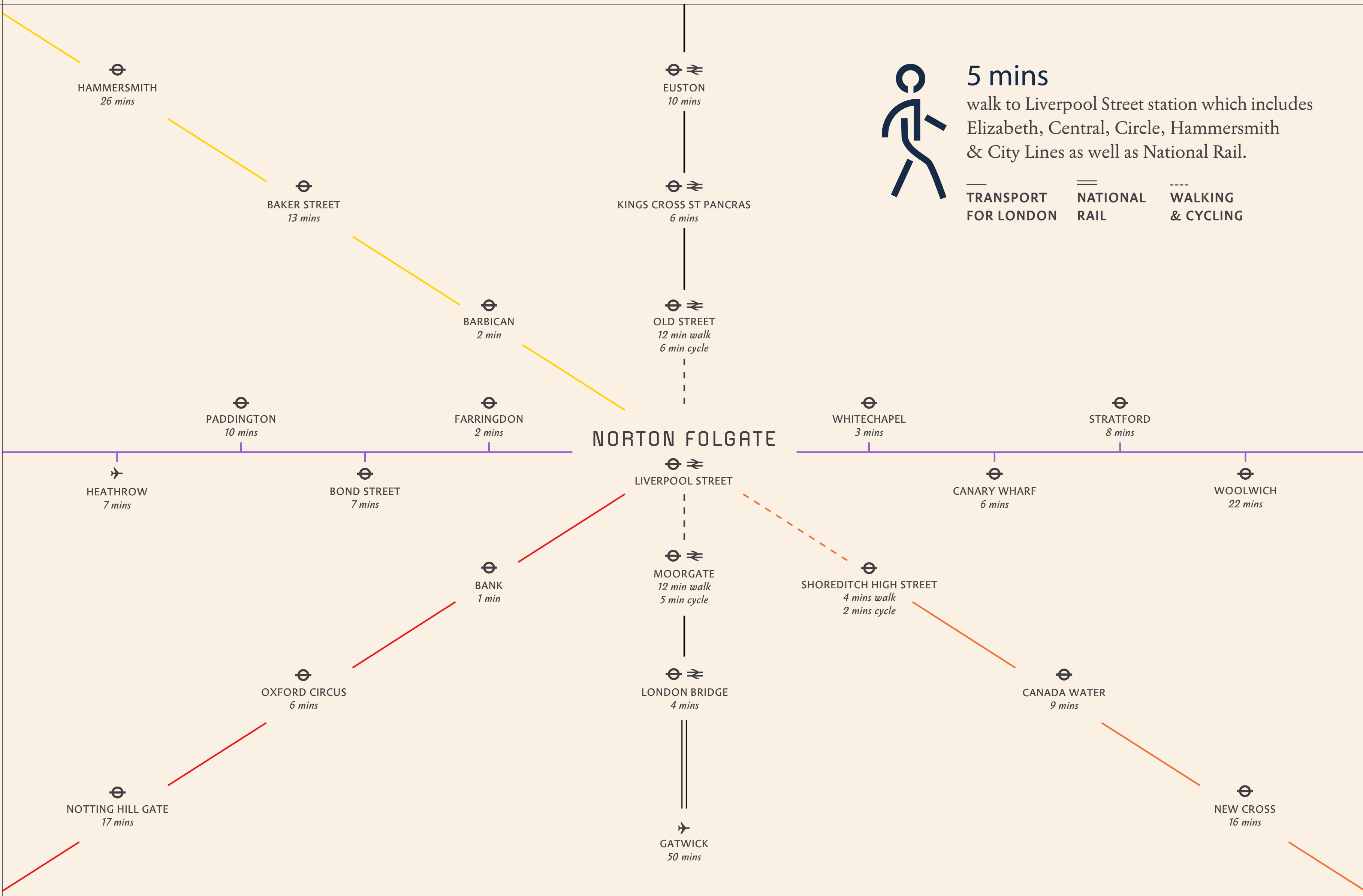




# A new retail & dining destination







# Ready-made connections

It's just a 5 minutes walk to Liverpool Street Station's Underground and mainline platforms, and 4 minutes to the Overground at Shoreditch High Street. Add the trains out of Moorgate and Farringdon, and 15 Norton Folgate has everything at hand. The capital. The commuter belt. And even flights out of Gatwick and Heathrow.





# A space for *growth*

A WALK past the coffee shop and bakery and into 15 Norton Folgate's quaint courtyard neatly frames a striking, stepped architectural design. One that sits in harmony with the wider Georgian and Victorian neighbourhood.

Large, modern windows bathe spaces in light while BREEAM 'Excellent' and WiredScore 'Platinum' ratings are complemented by shared shower and cycle facilities. Each of the three floors will be Work Ready, with workstations, a variety of meeting rooms and beautiful terrace spaces, with the option to add additional services.

For every innovative technology and modern motif, there's an eye-catching Victorian period touch. From the fireplaces to the colours and décor, the building's not only a place of work, but of character.









# Work Ready

## Fully fitted, furnished and *connected*

EFFECTIVE & SUSTAINABLE workspaces are available across a number of buildings at Norton Folgate. So you can focus on your business and settle into your new home swiftly and smoothly.

### READY TO GO

Fitted, furnished & connected.  
Everything you need to start working is included.

### TERM

Short, mid or long-term leases that flex to suit you.

### Options to suit *you*

#### FITTED

Fully furnished, sustainable workspaces plus the ability to use our 10GB fibre connection.

#### FULLY MANAGED

Get all the services you need to run your workspace for one monthly price.

OPTIONS TO SUIT YOU	FITTED	FULLY MANAGED
Fully furnished	•	•
Flexible leasing options	•	•
Sustainable Workspaces	•	•
Access to building end of trip facilities	•	•
Access to 10GB fibre connection	•	•
Fixed monthly cost		•
Fully managed 10GB WiFi connectivity		•
Health & Safety Support		•
M&E maintenance		•
Waste Removal & Recycling		•
Cleaning incl WC consumables		•
Utilities		•
Workspace Support from Shared Property Manager		•

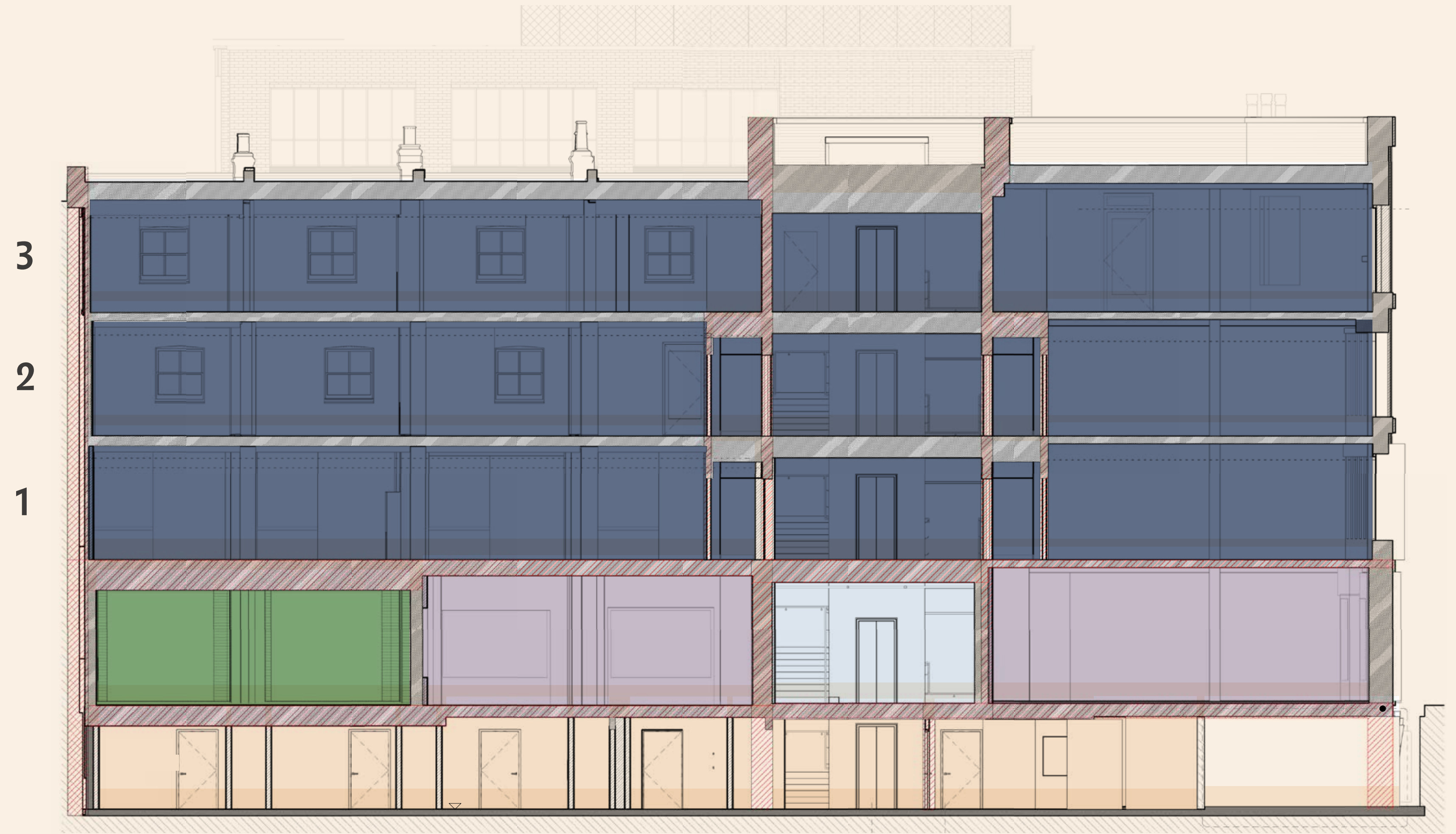




# Schedule *of areas*

- Office
- Retail
- Reception
- Basement
- Courtyard Entrance

Floor	Office (sq ft)	Terraces (sq ft)
3	3,348	313
2	3,827	917
1	4,833	-
G	-	-
<b>TOTAL</b>	<b>12,008</b>	<b>1,230</b>





# Ground Floor

- Retail
- Reception
- Lift
- Courtyard Access
- Core

SHOREDITCH HIGH STREET





# First Floor


TOTAL INTERNAL AREA  
4,833 sq ft


SHOREDITCH HIGH STREET




- Workspace
- Reception
- Meeting Rooms
- Kitchen/Breakout Space
- Teapoint
- Phonebooth
- Lobby
- Lift
- Toilets
- Core

 Private Reception

 47 Desks

 6 & 8 Person Meeting Rooms

 Kitchen/Breakout Area



# Second Floor

TOTAL INTERNAL AREA

3,827 sq ft

TERRACE

917 sq ft

SHOREDITCH HIGH STREET



- Workspace
- Reception
- Meeting Rooms
- Kitchen/Breakout Space
- Teapoint
- Phonebooth
- Lobby
- Lift
- Toilets
- Core
- Comms Cupboard

39 Desks

8 Person Meeting Rooms

Kitchen/Breakout Area

Private Terrace



# Third Floor

## TOTAL INTERNAL AREA

3,348 sq ft


## TERRACE


313 sq ft


SHOREDITCH HIGH STREET



- Workspace
- Reception
- Meeting Rooms
- Kitchen/Breakout Space
- Teapoint
- Phonebooth
- Lobby
- Lift
- Toilets
- Core

 26 Desks

 6 & 8 Person Meeting Rooms

 Kitchen/Breakout Area

 Private Terrace



# Building Specifications

FITTED *or* FULLY MANAGED

 **12,008**  
sq ft office space

BREEAM® 'Excellent'


 **3,422**  
sq ft retail space


 **WiredScore**  
PLATINUM

 **1,230**  
sq ft terrace space over 2 floors

 **Net Zero**  
at completion with all electric workspace

 **Changing facilities**  
Access to shared facilities with  
52 cycle racks, 52 lockers, 5 showers

 **2.6 – 3.25m**  
floor to ceiling height

 **1 x 630kg**  
passenger lift

 **Zero waste**  
to landfill targeted

 **Available now**

 **All Electric**  
building operation





# Get in touch

## Alex Colvin

ALEX.COLVIN@BRITISHLAND.COM  
07788 242 522

## Hannah Poole

HANNAH.POOLE@BRITISHLAND.COM  
07739 293 434



## Rory Paton

RORY.PATON@JLL.COM  
07900 245 221

## Chris Valentine

CHRIS.VALENTINE@JLL.COM  
07747 758 289

## Katie Sommer

KATIE.SOMMER@JLL.COM  
07703 608 316

## Honor Dunning

HONOR.DUNNING@JLL.COM  
07999 139 511



## James Neville

JAMES.NEVILLE@ALLSOP.CO.UK  
07789 658 540

## Alice Logan

ALICE.LOGAN@ALLSOP.CO.UK  
07720 070 417

## Peter Lance

PETER.LANCE@ALLSOP.CO.UK  
07813 046 926



# NORTON FOLGATE

The British Land Company PLC and their agents give notice that: These particulars are set out as a general outline only, for the guidance of intending purchasers or lessees and do not constitute, nor constitute part of, an offer or contract; all descriptions, images, dimensions, references to condition and necessary permission for use in occupation and other details are given without responsibility, and any intending purchasers or tenants should not rely on them as statements or representations of fact, but must satisfy themselves by inspection or otherwise as to the correctness of each of them. All floor areas and measurements are approximate. April 2024.